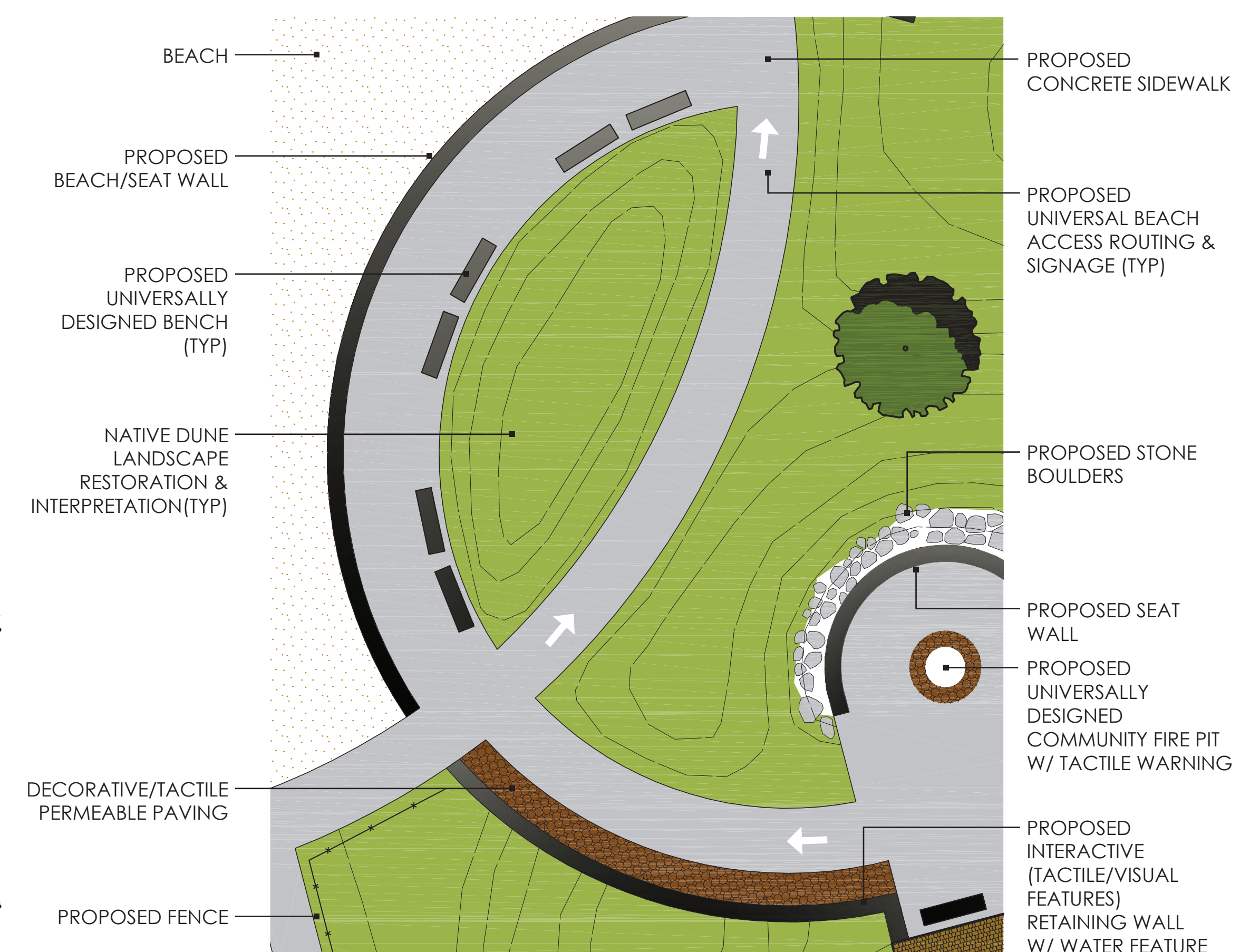


ELK RIVER FISHING ACCESS
NO SCALE



BEACH PLAZA ENLARGEMENT
NO SCALE

NORTH

Gosling Czubak
engineering & architecture, inc.
1280 Business Park Drive
Troy, MI 48068-8607
231-946-9181 800-885-1002
fax: 231-941-6603

PROJECT: Elk Rapids MNRTF Grant App
CLIENT: Village of Elk Rapids, Michigan
DATE: 3-10-10
JOB #: 2010150.03
SCALE: As Noted
REVISIONS:

L. LAKE MI. BEACH ACCESS IMPROVEMENTS
CONCEPTUAL SITE MASTER PLAN
Village of Elk Rapids, Michigan